

Microsoft SQL Server 2008
Installation guide and configuration settings
on Microsoft Windows server version 2003/2008/2008R2
(March 2012)

This guide explains the different steps for installing and configuring
Microsoft SQL Server 2008 for COBA's software.

- 1. Technical requirements**
- 2. Installing Microsoft SQL Server 2008**
- 3. Microsoft SQL Server 2008 SP3**



1 - Technical requirements

This table shows the different versions of SQL Server 2008 supported by COBA's software.

Version	Number of CPU ¹	64-bit Support	Memory (Max-RAM)²
Enterprise Edition	Max OS supported	Yes	Operating system maximum
Standard Edition ³	4	Yes	Operating system maximum
Workgroup Edition	2	Windows on Windows (WOW)	4 GB

¹ Includes support for multi-core processors.

² If the minimum RAM for the server is not met, the Setup program will display a warning.

³ COBA's recommended version for the majority of installations.

IMPORTANT : Microsoft SQL Server 2008 R2 is not supported by COBA's software.

2 - Installing Microsoft SQL Server 2008

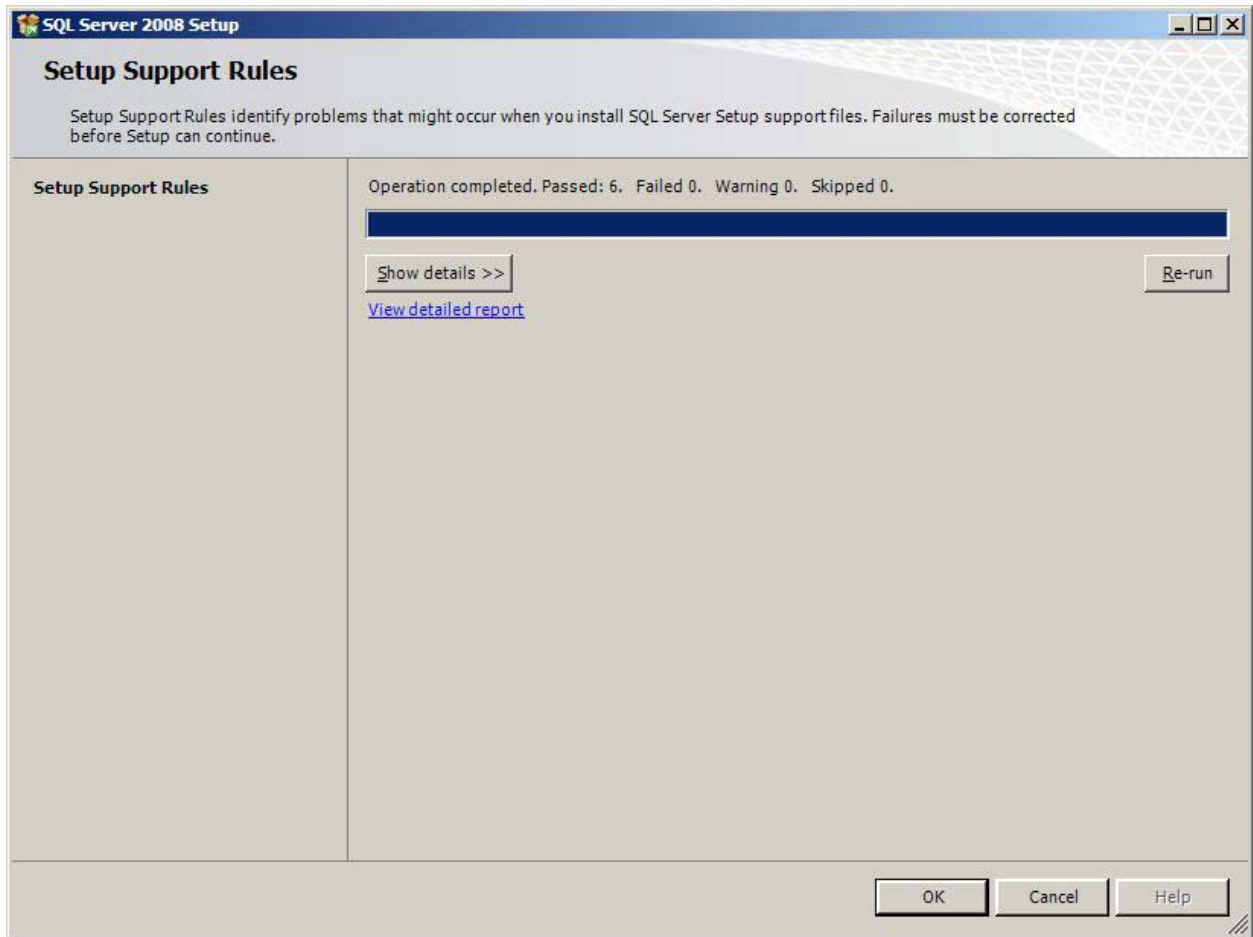
Run Setup from installation CD



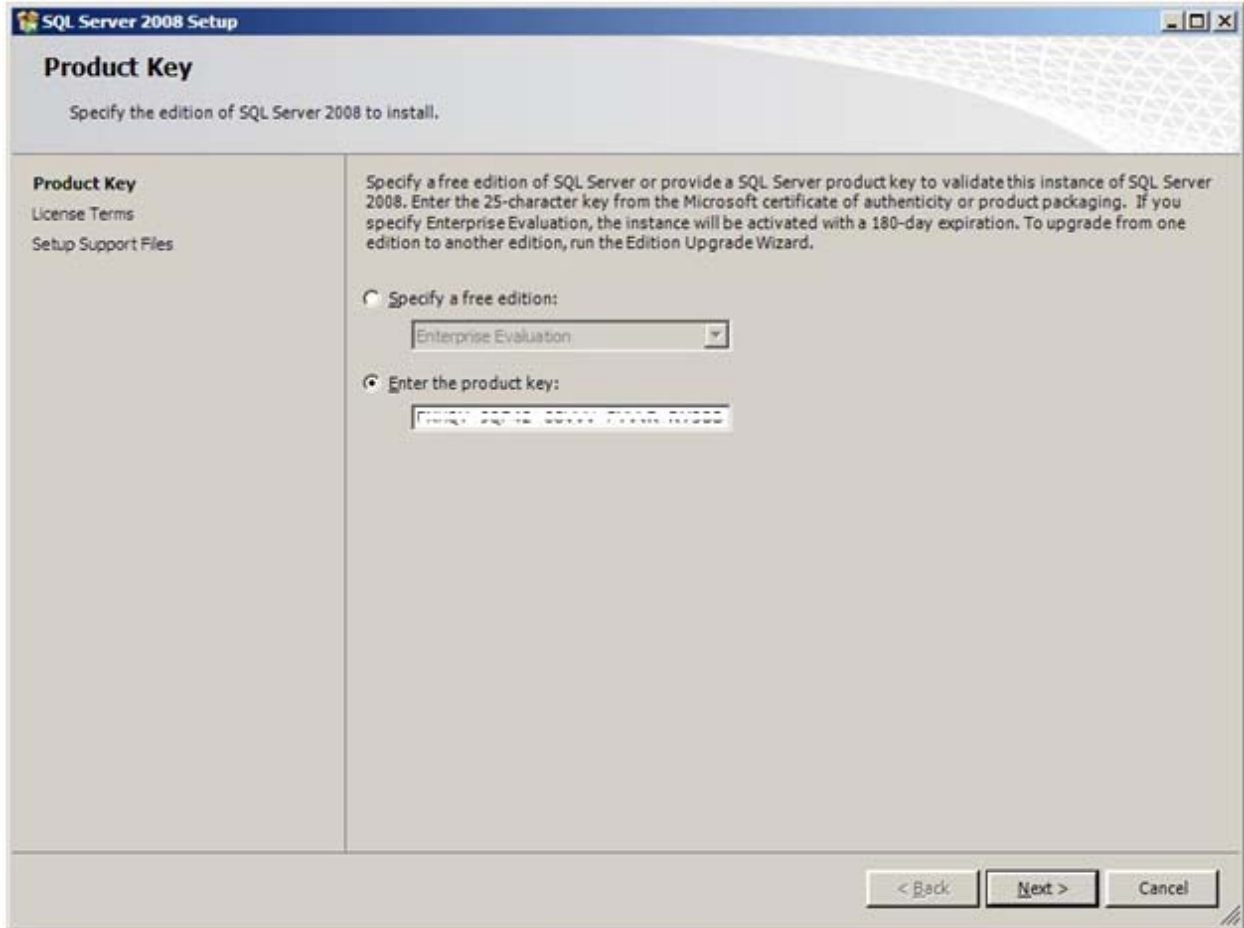
Click on **Installation** along the left side of this window below Planning.



Click **New SQL Server stand-alone installation or add features to an existing installation** to continue



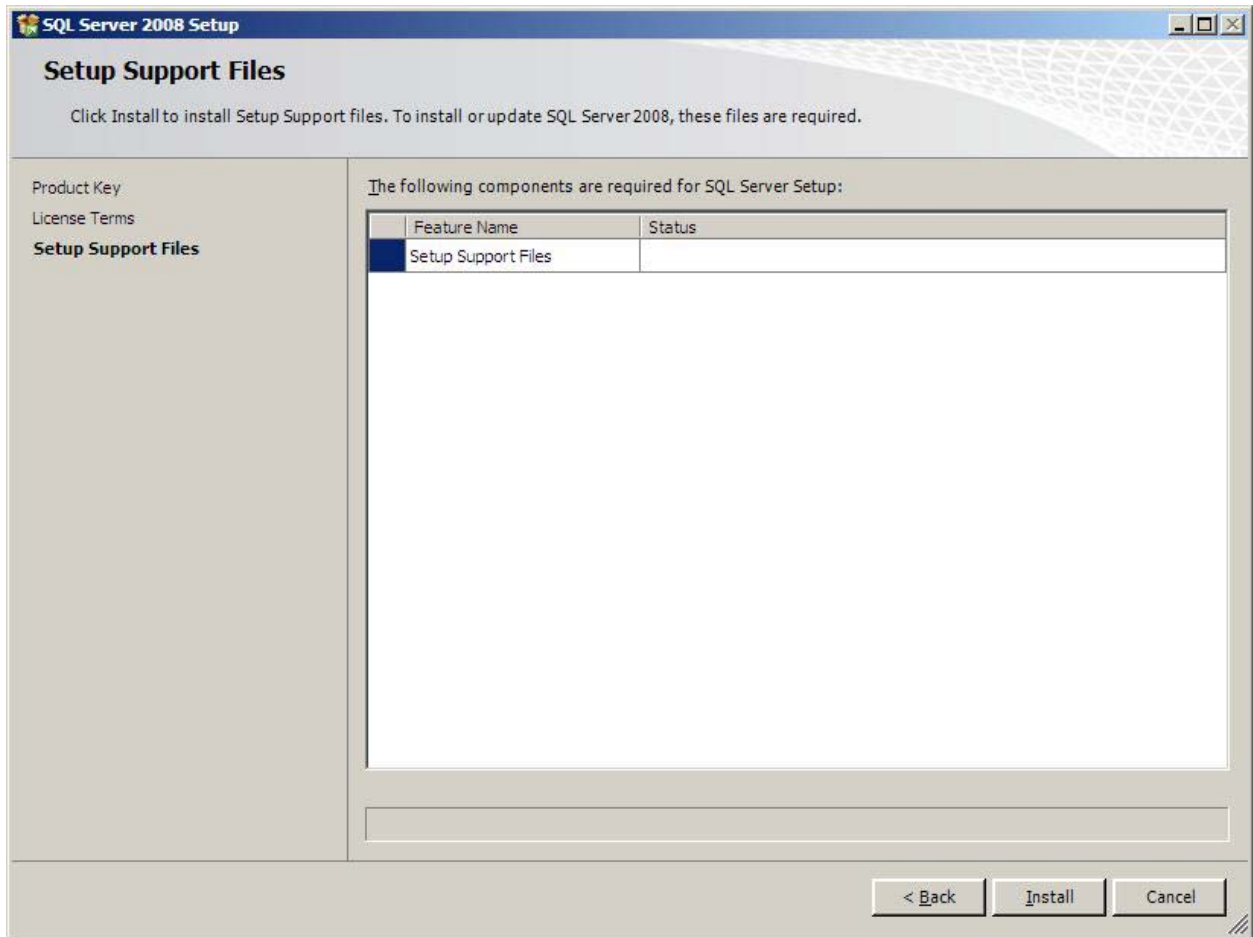
After the Setup Support Rules are completed click **OK** to continue the installation



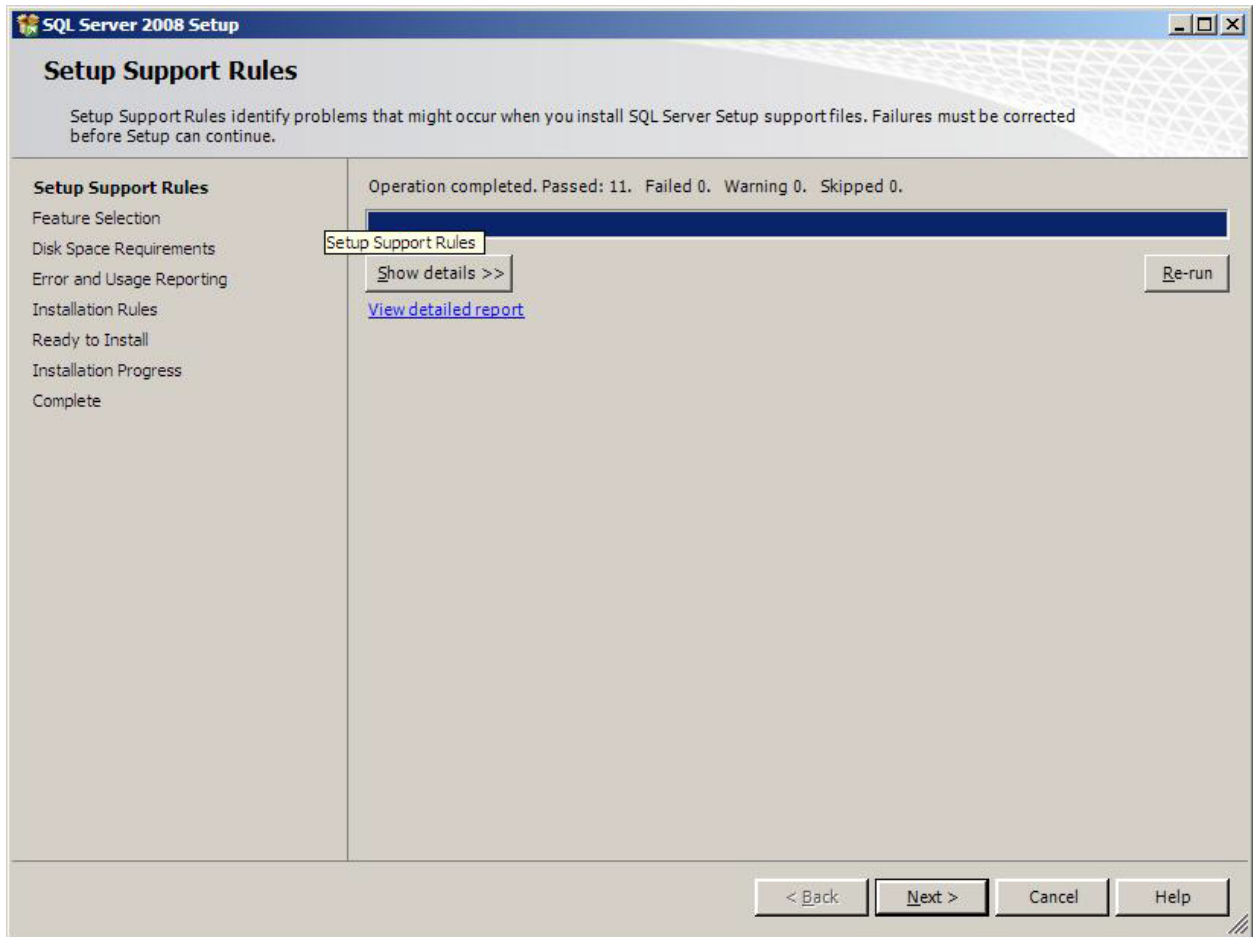
Enter the product key and click **Next** to begin the installation of the Server components



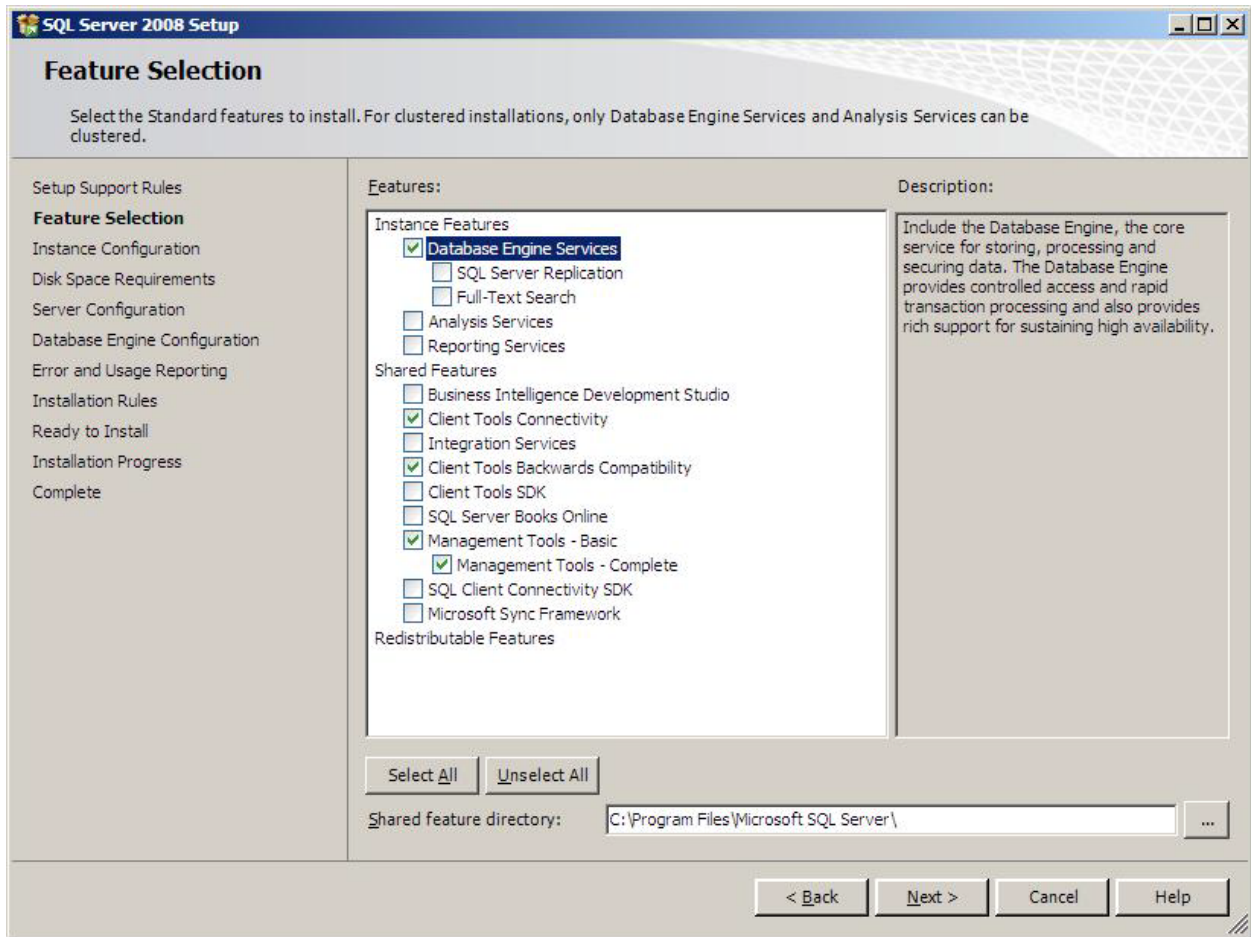
Check **I accept the license terms** and then click **Next**



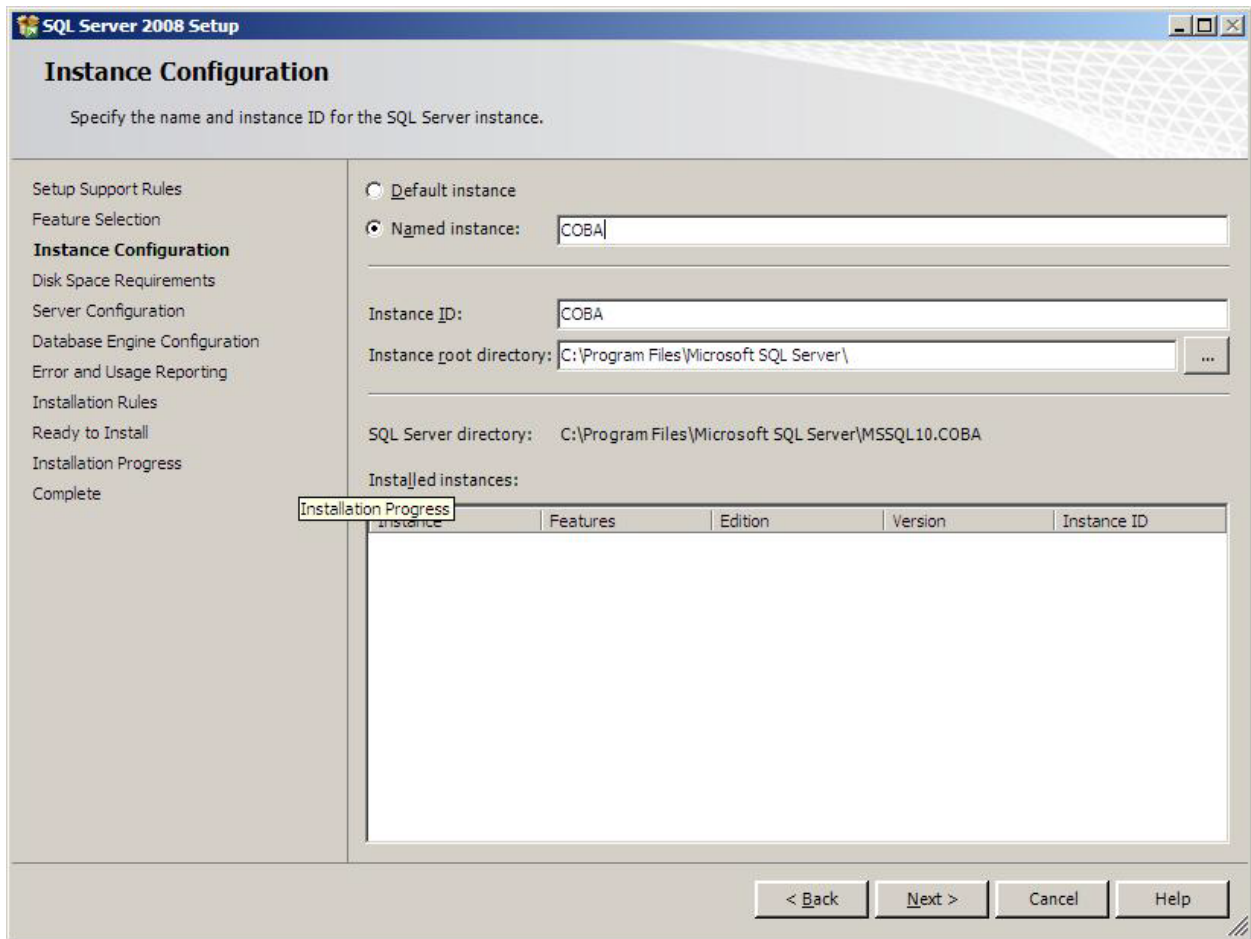
Click **Install** to proceed



After the Setup Support Rules are completed click **Next** to continue the installation

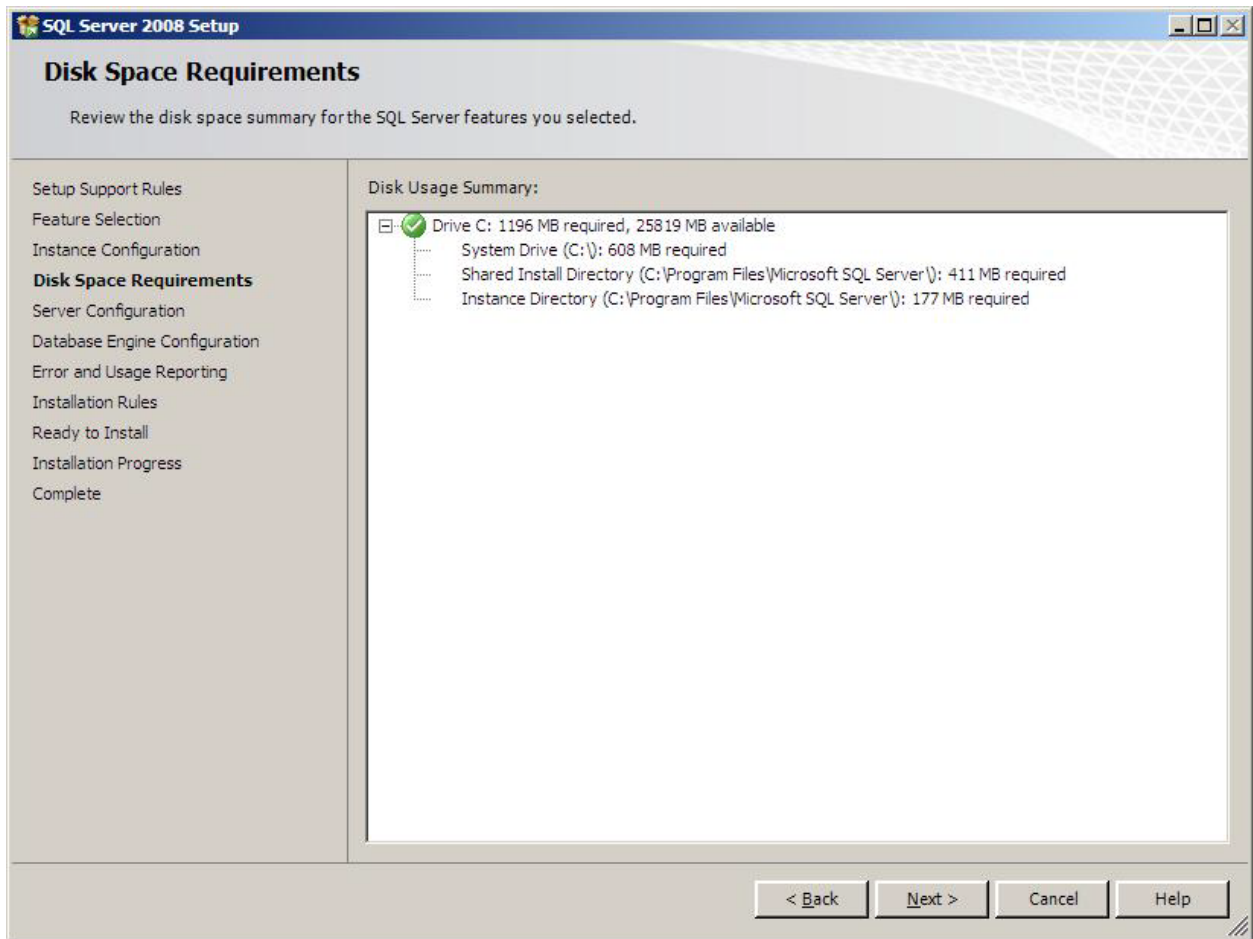


Select the features as shown in the image above for installation then click **Next**

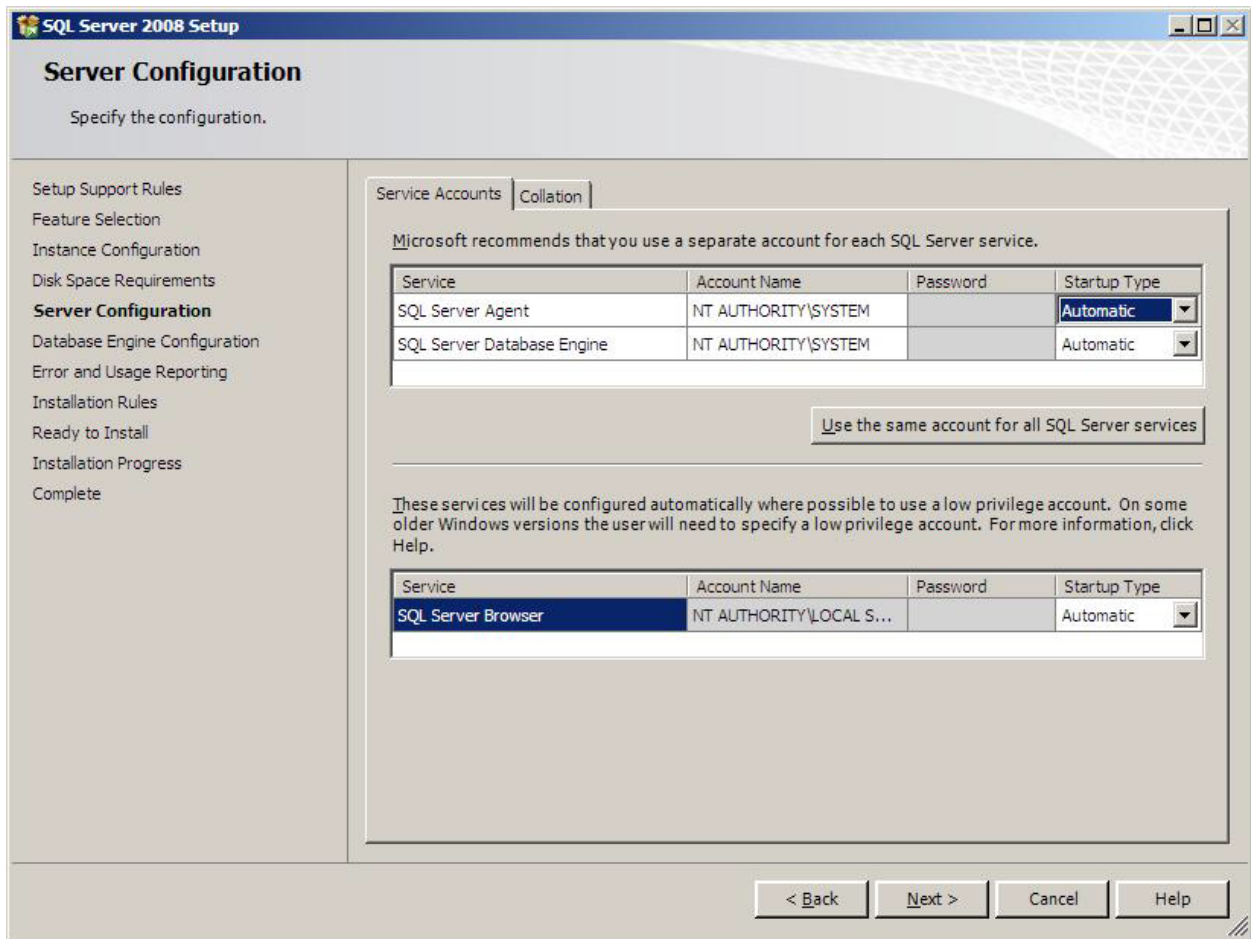


Choose **Named instance** and type **COBA** as the value and click **Next**

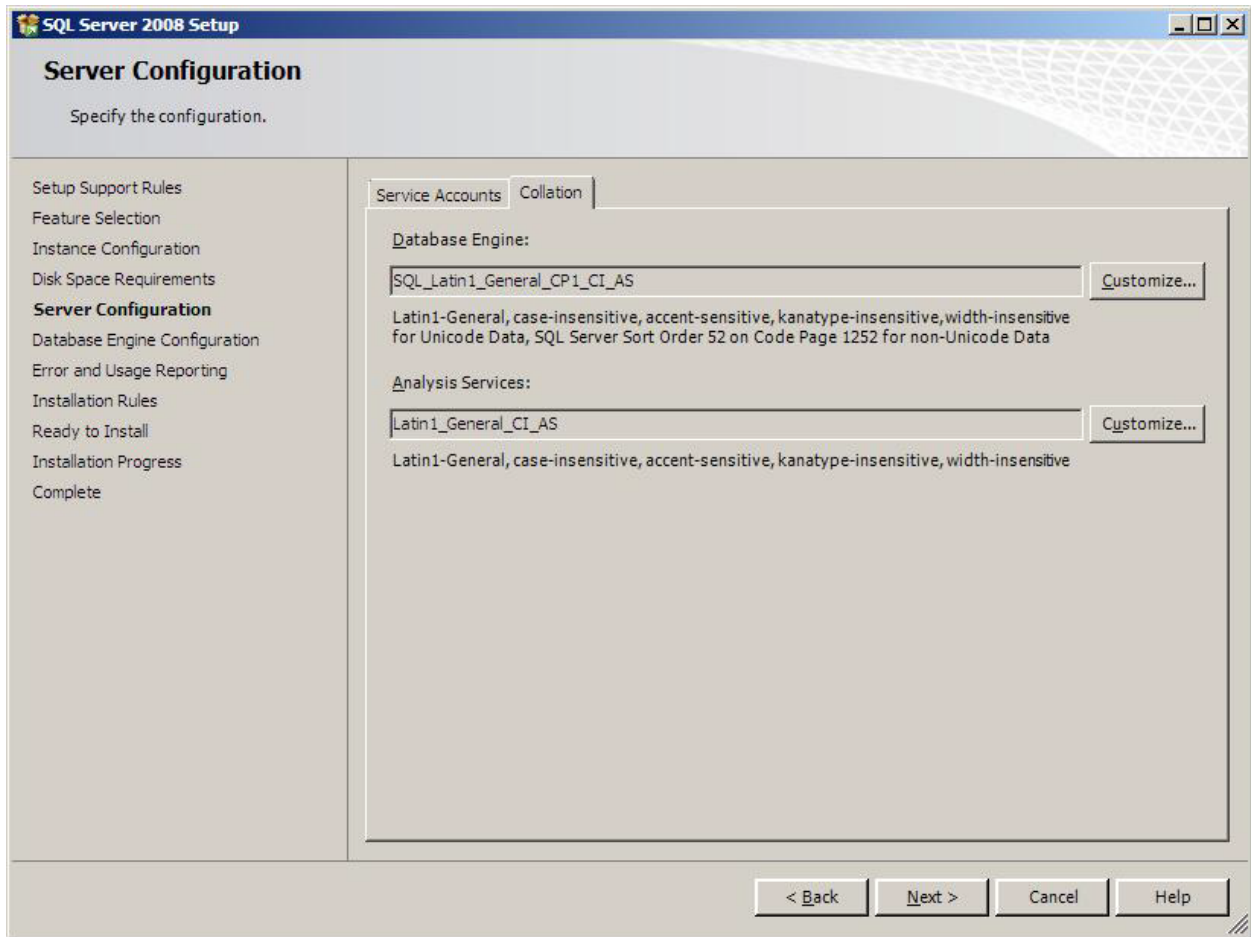
Even if this is the only instance of MS SQL Server to be installed, you must name the Instance Cobra for the Cobra Management Software to work correctly.



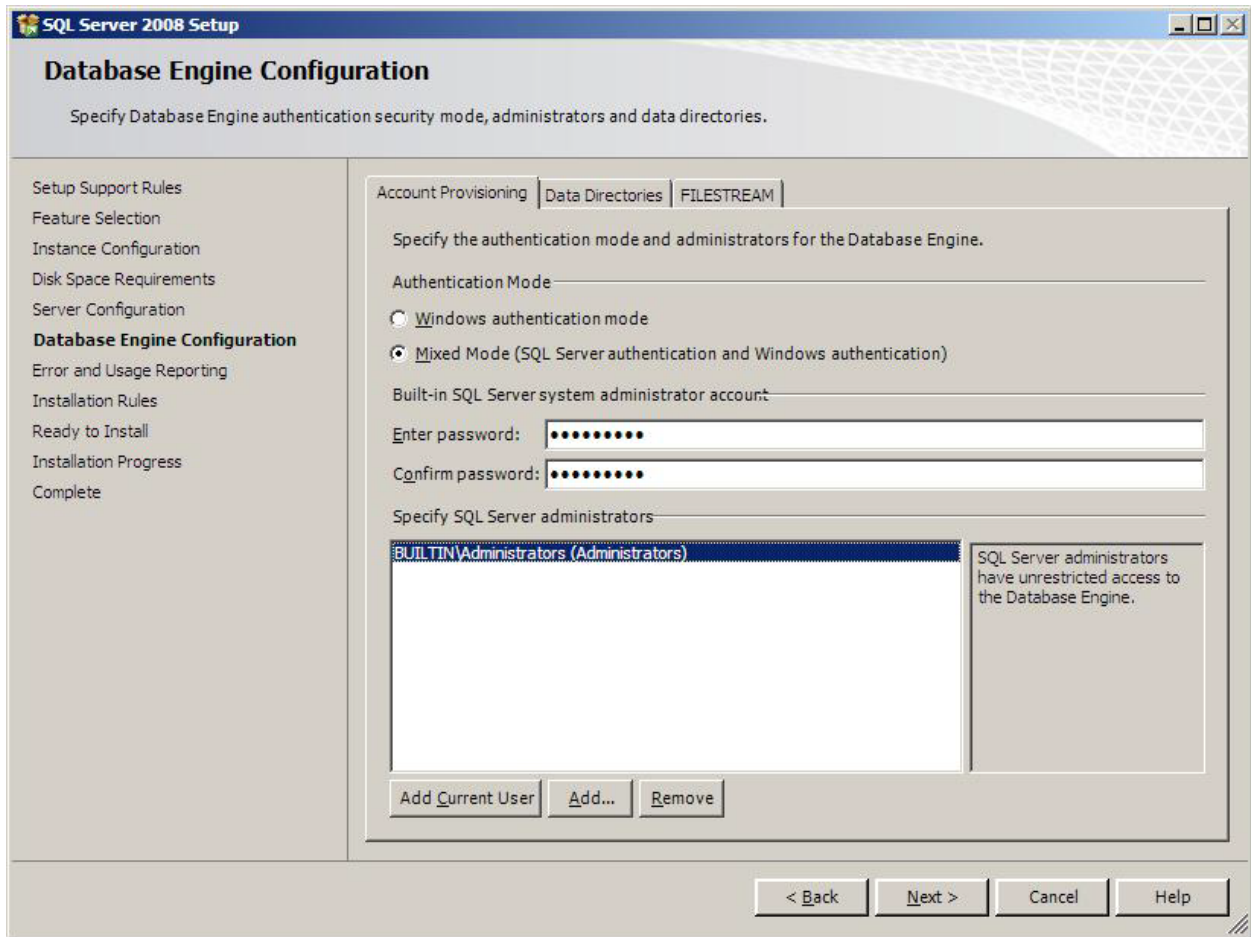
Click **Next** after verifying the Disk Space Requirements



Select the System account for SQL Server Agent and SQL Server Database Engine and set the services to **Automatic** Startup

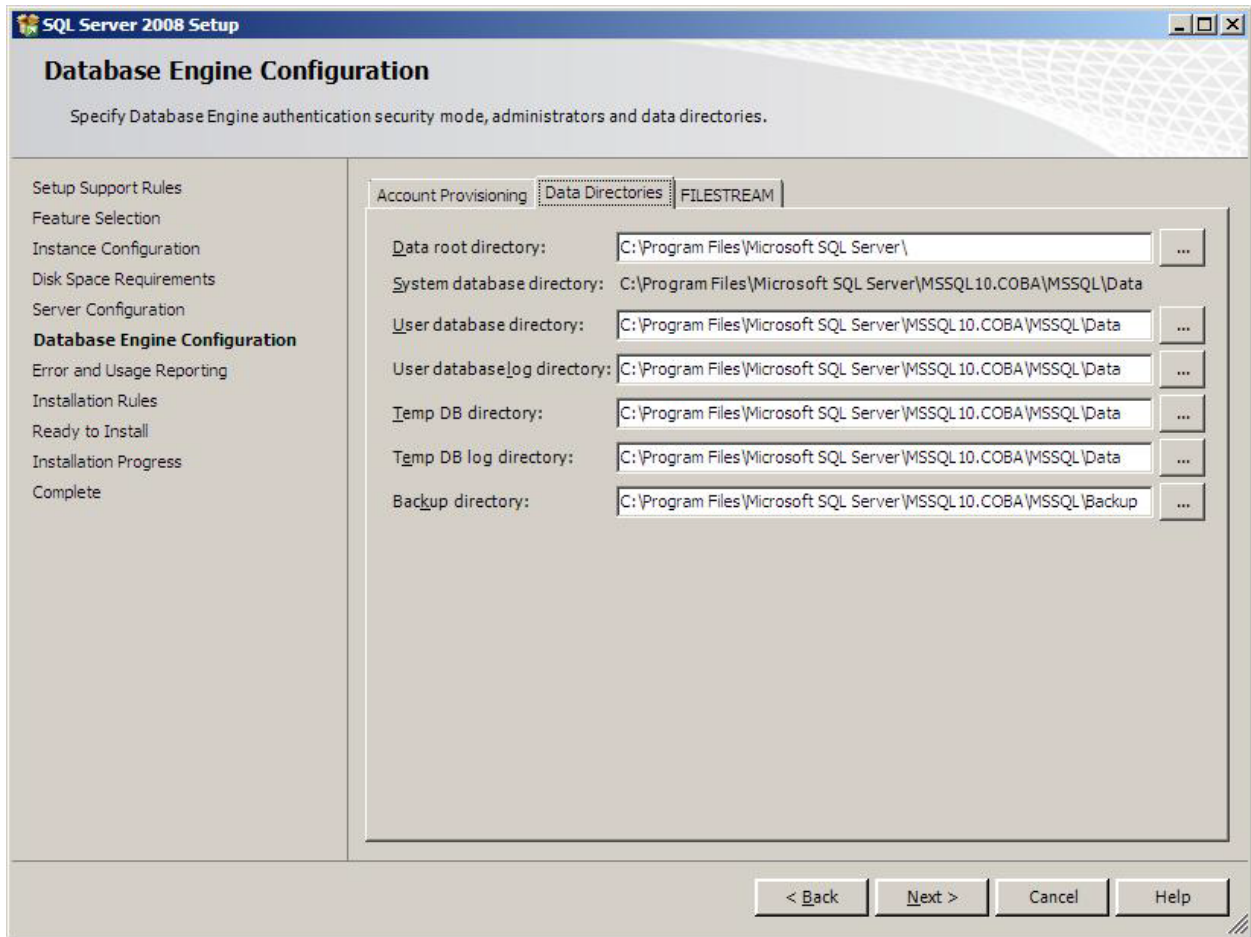


Check the **Collation** tab to verify that the settings are the same as the above image then click **Next**

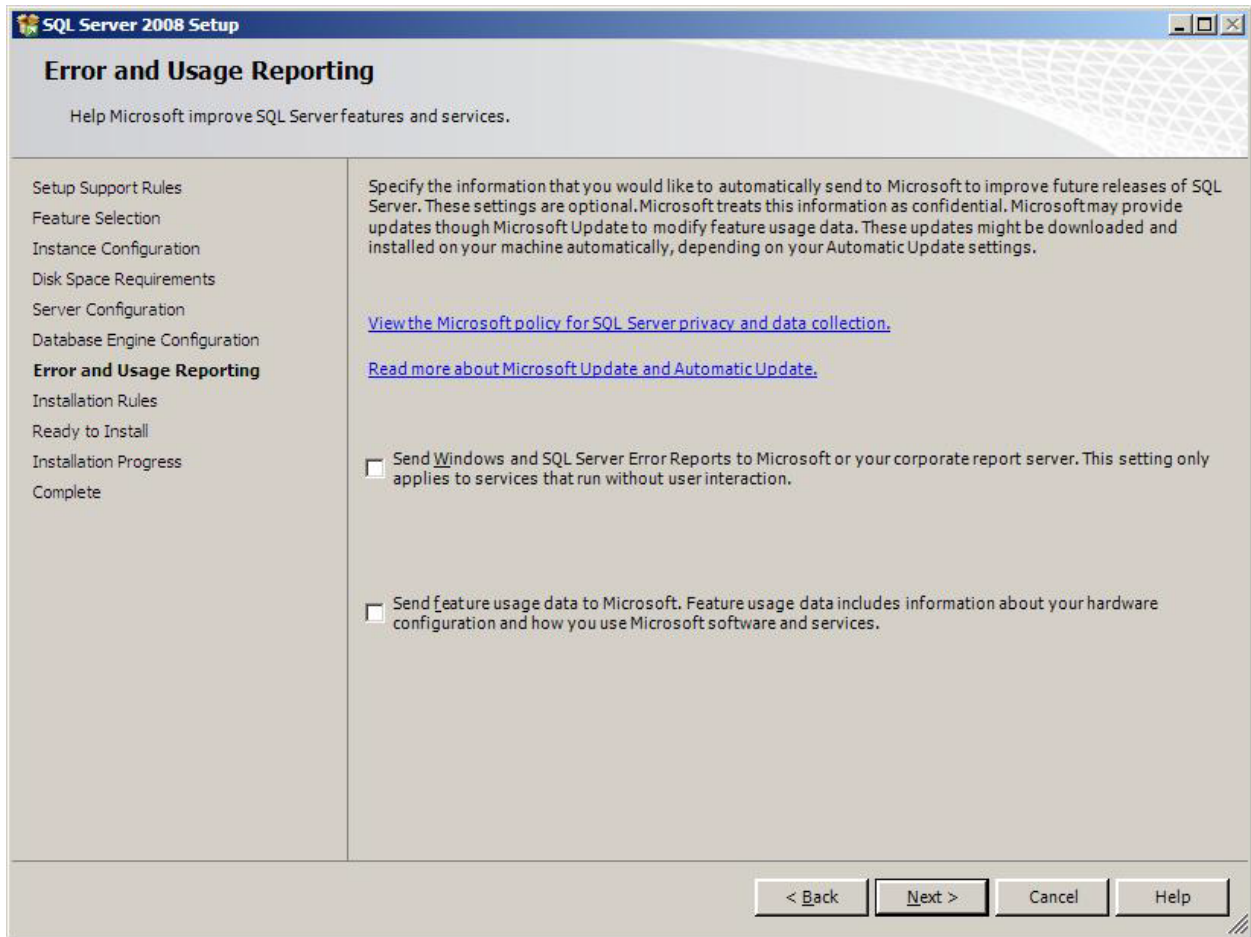


Select **Mixed Mode** authentication mode and enter in a password for the SA account.

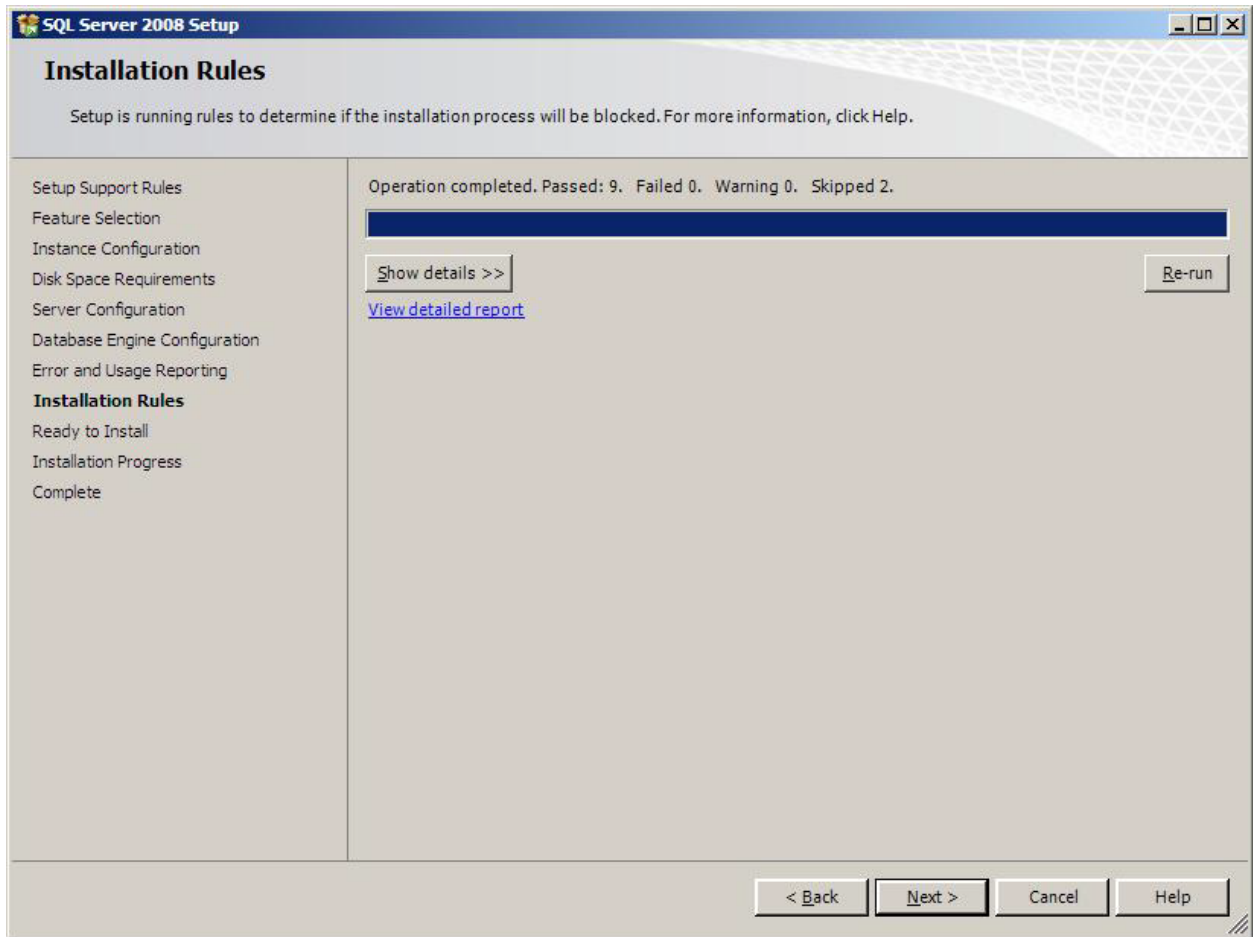
Add **Builtin\Administrators** to the SQL Server administrators group



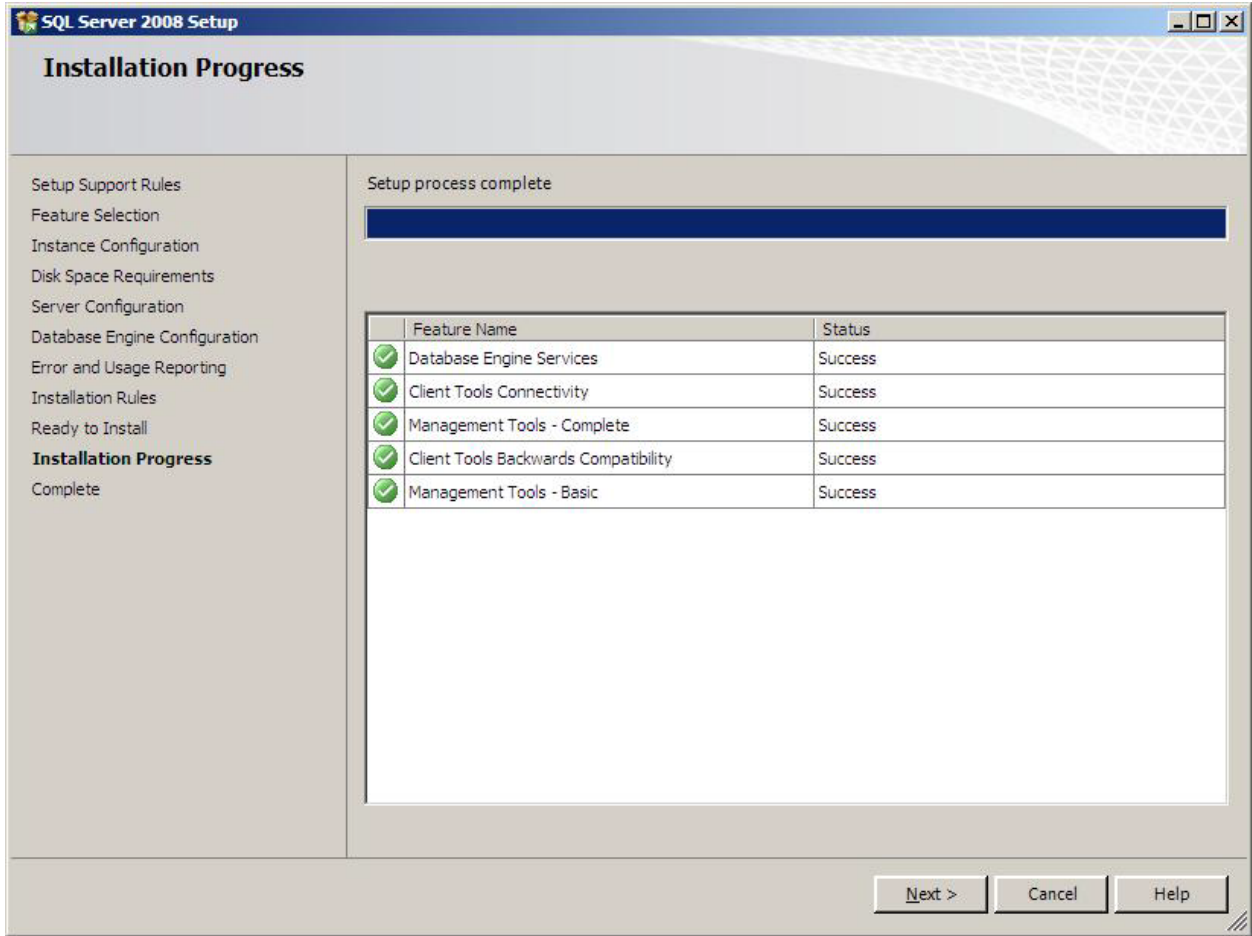
Click the Data Directories tab and verify the paths then click **Next** to continue



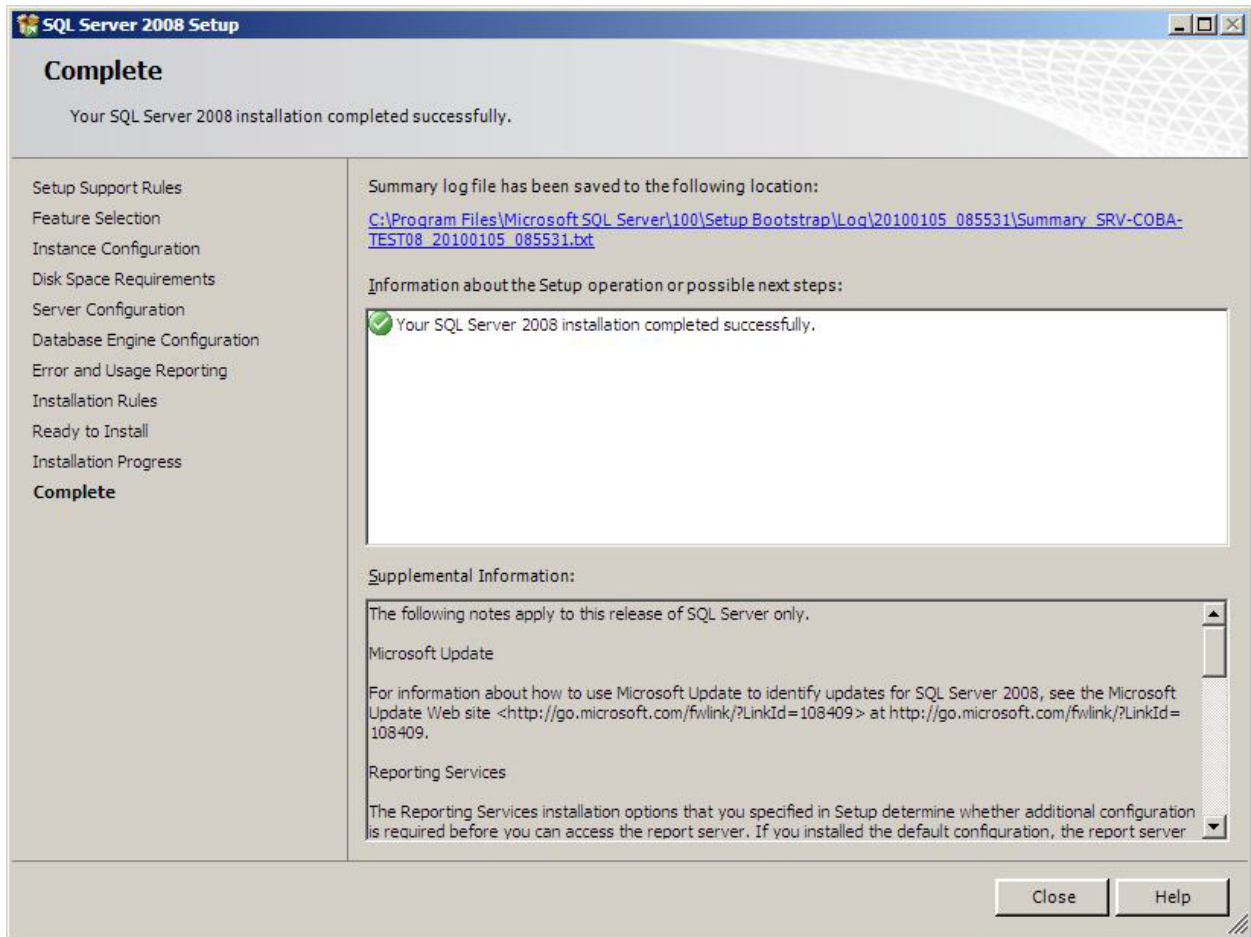
We leave these options to the clients discretion on whether to select them or not



Click **Next** to proceed



Click **Next** to proceed



Once the installation is completed click **Close**

3 - Microsoft SQL Server 2008 Service Pack 1

After installing SQL Server 2008, you must install this update:

Microsoft SQL Server 2008 Service Pack 3

Service Pack 3 is the only versions authorised by COBA.

IMPORTANT : Microsoft SQL Server 2008 R2 is not supported by COBA's software.